

Trail users see a detour

by: P.J. LASSEK World Staff Writer
Monday, August 24, 2009
8/24/2009 3:46:20 AM

A trail detour that connects the West Bank Trail to the trail that leads to 71st Street is being installed due to enhancements underway at Turkey Mountain.

The two-phase Turkey Mountain project, at the existing trailhead east of Elwood Avenue near 68th Street, will redevelop the site into a destination point with features including boulders for climbing and a shelter for gathering.

The project is estimated to cost between \$2.5 million and \$3 million, and is being funded by the George Kaiser Family Foundation.

Currently, there are two types of trails at the site, said design consultant Keith Franklin, owner of LandPlan Consultants.

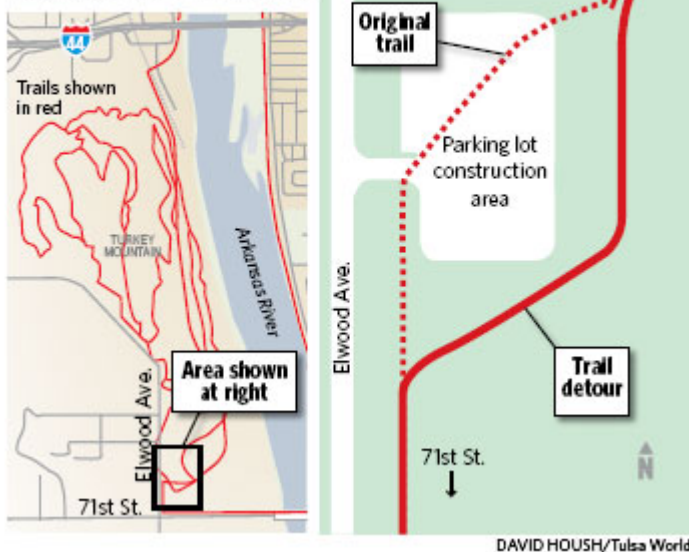
One is paved and is part of the east-west River Parks trail system. Another is a wilderness trail into the wooded area of Turkey Mountain used by equestrians, mountain bikers and pedestrians, he said.

The first phase — \$1.5 million — includes a new parking lot with six trailer spaces for horses, 80 parking spaces, new lighting, flagstone pavers, rest rooms, the bouldering area, and landscaping with benches and water fountains.

There also has been some improvements on about 300 feet of the wilderness trail.

The detour will route users on the paved trail around the east side of the parking lot instead of each trail ending at the lot, Franklin said.

Construction detour for Turkey Mountain bike trail



The detour is being created to keep the trail open and users safe during construction work, he said.

Trail use on the west bank of the Arkansas River has gradually increased since the improvements on the east bank began in late 2007.

Ultimately, the trail will be permanently rerouted so there is a continuous connection of the trail to 71st Street, Franklin said.

Franklin said it is estimated the detour will be in place between 30 to 45 days.

Phase two, which is estimated to cost between \$1 million to \$1.5 million, will include a shelter and seating area that overlooks the river and Oral Roberts University, he said.

It includes making the trail more handicapped-accessible and kiosks providing trail maps.

P.J. Lassek 581-8382
pj.lassek@tulsa-world.com

Associate Images:



Cyclist Sam Naifeh walks his bicycle past a muddy area on a temporary path around construction at the Turkey Mountain trail. STEPHEN HOLMAN / Tulsa World

Copyright © 2009, World Publishing Co. All rights reserved

[Return to Story](#)